
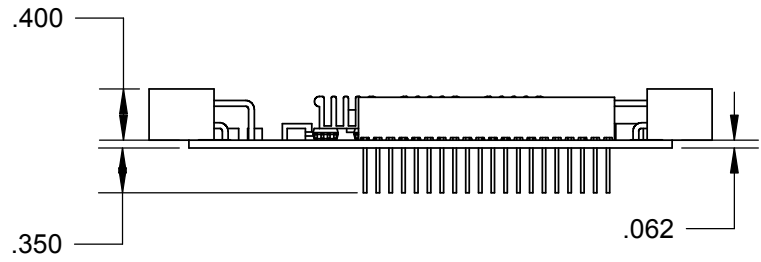
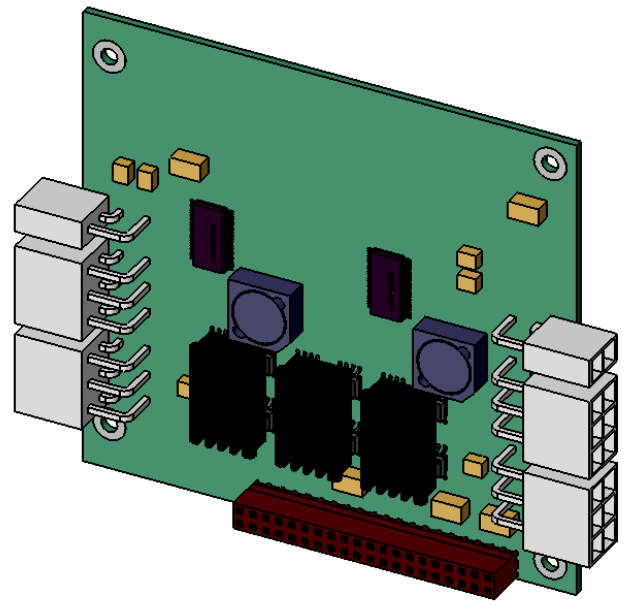
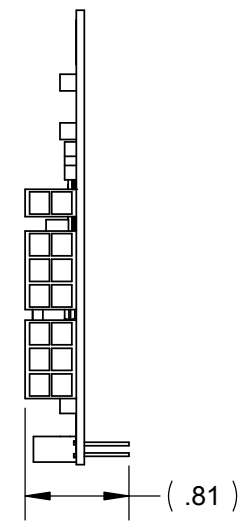
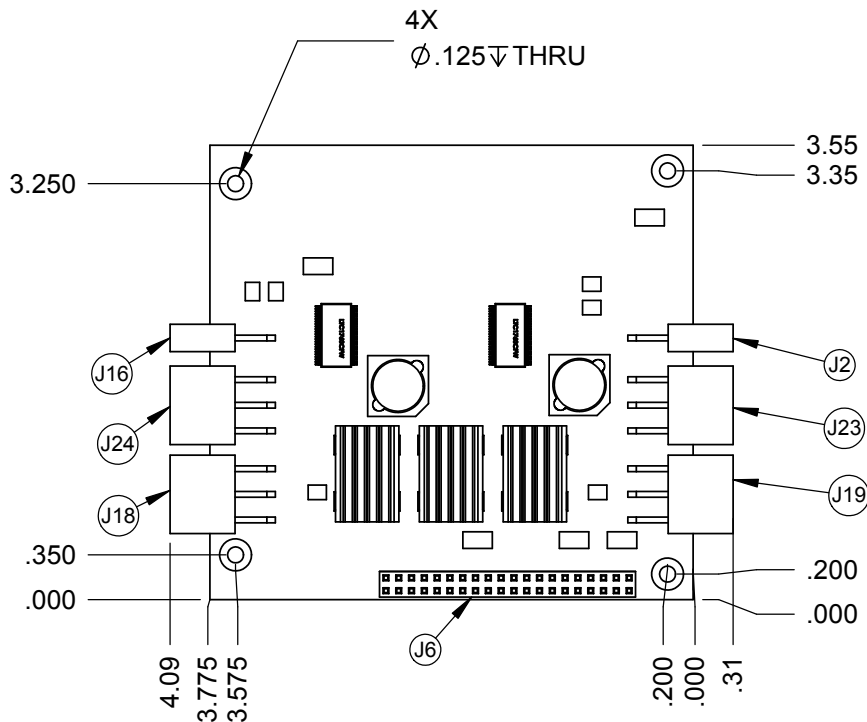


ITEM NO.	PART NUMBER	DESCRIPTION	QTY.
1	92-02000-11	MP-04, MP-08 BASE/BOTTOM MODULE	1
2	standoff hex 001	.25 X .60 LONG HEX STAND-OFF, #4-40	4
3	92-02000-02	EM-022, MP-08 EXPANSION/TOP MODULE	1

UNLESS OTHERWISE SPECIFIED	DRAWN	JCD	1/21/05			
	MODIFIED	MSS	3/21/05			
	CHECKED					
	ENG APPR.	JCC	4/15/05			
	MFG APPR.	MFH	5/15/05			
INTERPRET GEOMETRIC TOLERANCING PER:	Q.A.			TITLE: MP-08 HIGH CURRENT BATTERY MANAGEMENT STACK		
MATERIAL	PROPRIETARY AND CONFIDENTIAL THE INFORMATION CONTAINED IN THIS DRAWING IS THE SOLE PROPERTY OF OCEANSERVER TECHNOLOGY, INC. ANY REPRODUCTION IN PART OR AS A WHOLE WITHOUT THE WRITTEN PERMISSION OF OCEANSERVER TECHNOLOGY, INC. IS PROHIBITED.			SIZE A	DWG. NO. 92-02000-12	REV 1.2
FINISH				SCALE:	WEIGHT:	SHEET 1 OF 3
DO NOT SCALE DRAWING						



NOTE:
 1. OCEANSERVER PROVIDES A SELECTION OF CABLE ASSEMBLIES FOR USE WITH IBPS BATTERY MODULE
 2. CONNECTOR J6 IS MEANT FOR USE IN OCEANSERVER STACKING APPLICATIONS ONLY

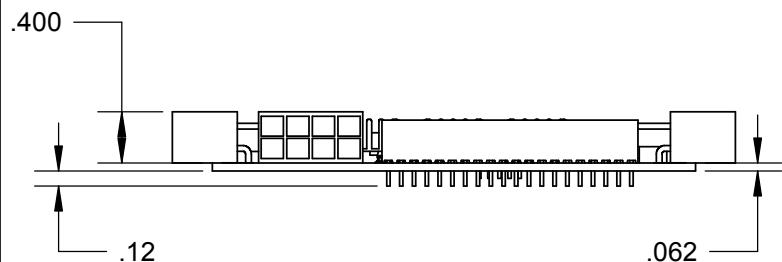
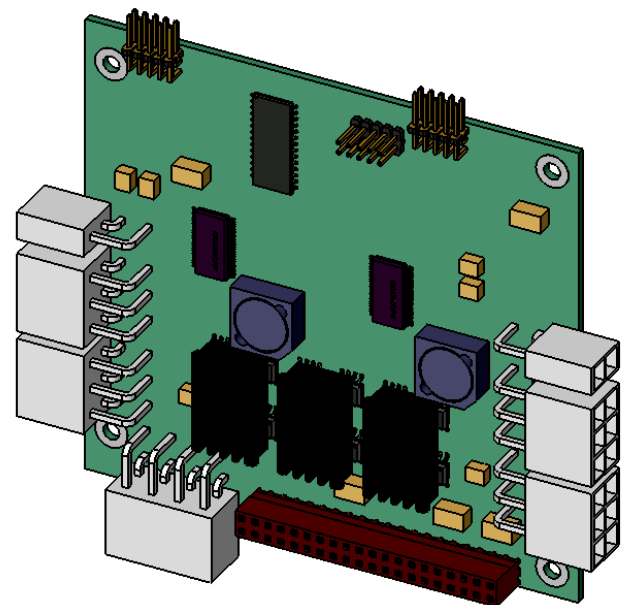
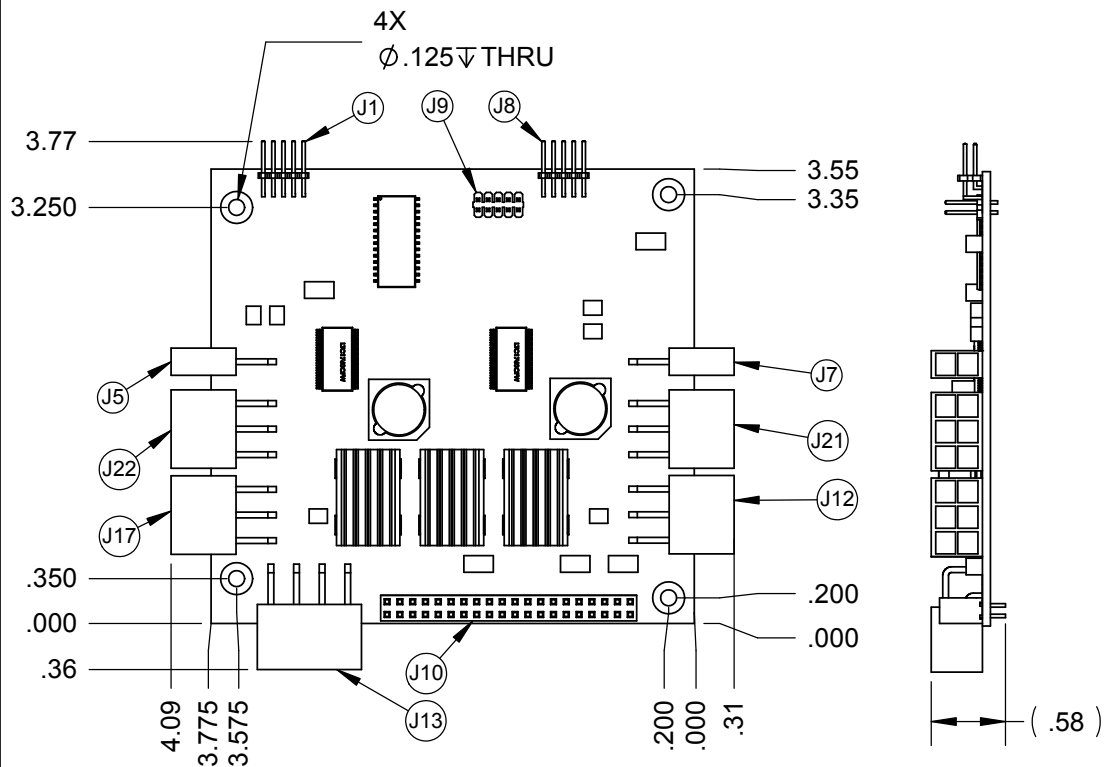
UNLESS OTHERWISE SPECIFIED		NAME	DATE
	DRAWN	JCD	1/21/05
	MODIFIED	MSS	3/21/05
	CHECKED		
	ENG APPR.	JCC	4/15/05
	MFG APPR.	MFH	5/15/05
INTERPRET GEOMETRIC TOLERANCING PER:	Q.A.		
MATERIAL	PROPRIETARY AND CONFIDENTIAL		
FINISH	THE INFORMATION CONTAINED IN THIS DRAWING IS THE SOLE PROPERTY OF OCEANSERVER TECHNOLOGY, INC. ANY REPRODUCTION IN PART OR AS A WHOLE WITHOUT THE WRITTEN PERMISSION OF OCEANSERVER TECHNOLOGY, INC. IS PROHIBITED.		
DO NOT SCALE DRAWING			



TITLE: TOP MODULE FOR MP-08 HIGH CURRENT BATTERY MANAGEMENT STACK

CONNECTOR	NOTES
J18, J19, J23, J24	MATES WITH (MOLEX MINIFIT™) PART# 39-01-2060
J2, J16	MATES WITH (MOLEX MINIFIT™) PART# 39-01-2020

SIZE	DWG. NO.	REV
A	92-02000-02	1.2
SCALE:	WEIGHT:	SHEET 2 OF 3



- NOTE:
 1. OCEANSERVER PROVIDES A SELECTION OF CABLE ASSEMBLIES FOR USE WITH IBPS BATTERY MODULE
 2. CONNECTOR J10 IS MEANT FOR USE IN OCEANSERVER STACKING APPLICATIONS ONLY

CONNECTOR	NOTES
J17, J22, J12, J2	MATES WITH (MOLEX MINIFIT™) PART# 39-01-2060
J5, J7	MATES WITH (MOLEX MINIFIT™) PART# 39-01-2020
J13	MATES WITH (MOLEX MINIFIT™) PART# 39-01-2080
J1	STANDARD 2 X 4, .100 X .100 INCH CENTERLINE
J8, J9	STANDARD 2 X 5, .100 X .100 INCH CENTERLINE

UNLESS OTHERWISE SPECIFIED	NAME	DATE
DRAWN	JCD	1/21/05
DIMENSIONS ARE IN INCHES TOLERANCES: FRACTIONAL ± 1/32 ANGULAR: MACH ± .5° BEND ± 1° TWO PLACE DECIMAL ± .010 THREE PLACE DECIMAL ± .005	MODIFIED	MSS
INTERPRET GEOMETRIC TOLERANCING PER:	CHECKED	
MATERIAL	ENG APPR.	JCC
FINISH	MFG APPR.	MFH
DO NOT SCALE DRAWING	Q.A.	
PROPRIETARY AND CONFIDENTIAL THE INFORMATION CONTAINED IN THIS DRAWING IS THE SOLE PROPERTY OF OCEANSERVER TECHNOLOGY, INC. ANY REPRODUCTION IN PART OR AS A WHOLE WITHOUT THE WRITTEN PERMISSION OF OCEANSERVER TECHNOLOGY, INC. IS PROHIBITED.		



TITLE: BASE MODULE FOR MP-08 HIGH CURRENT BATTERY MANAGEMENT STACK

SIZE	DWG. NO.	REV
A	92-02000-11	1.2
SCALE:	WEIGHT:	SHEET 3 OF 3