

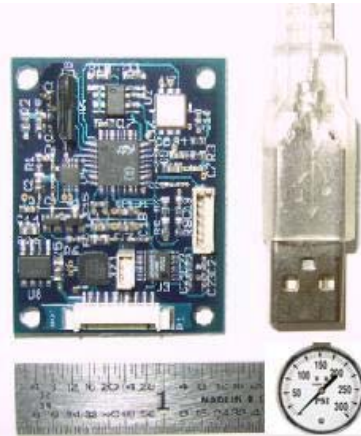


## ***OceanServer USB & Serial 3 Axis Digital Compass***

### **OS3500 Solid State Tilt Compensated Compass with Roll, Pitch and Depth Measurement**

#### ***Data Sheet***

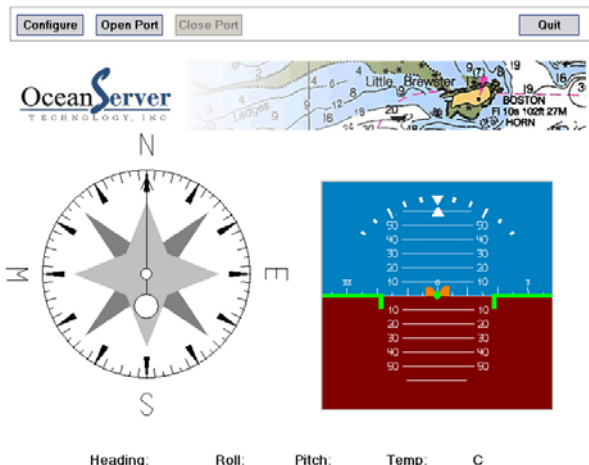
The OS3500 is an extremely small form factor (1.4" x 1.8") three axis, tilt compensated digital compass. The flexible design allows customers to use either a USB or RS232 Serial connection for system integration. The OS3500 provides precise heading, roll and pitch data ideal for rapid attitude measurement. The OS3500 supports the direct connection of an amplified pressure transducer and the ability to convert the pressure data to depth in water.



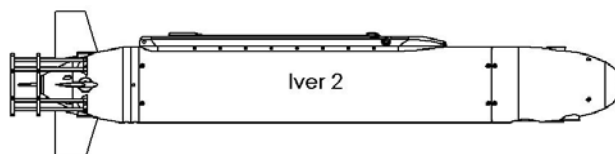
#### ***Specifications***

- > **Ultra Low Cost Design**
- > **Size : 1.4" x 1.8" PCB**
- > **Precision Compass – Tilt Compensated**
- > **3 – Axis Honeywell Magneto Resistive Sensors**
- > **2 – Axis Memsic MEMS Accelerometer for Roll and Pitch Angle Measurement**
- > **1-20 Hz Continuous Update Rate**
- > **Simple to use ASCII Interface includes Hard-Iron Calibration and Data Configuration**
- > **Digital Filters, Dampening**
- > **USB to Serial Driver or Direct Serial Connection**
- > **Low Power Circuit Consumption (operates on 5V input)**
- > **Accuracy: 1 Degree Azimuth, Resolution: 0.1 Degree**
- > **Roll and Pitch: 0.1 Degree Resolution**
- > **Supports Directly Connecting a Standard Pressure Sensor to Report Depth in Water for Marine Applications**

OceanServer compasses include Microsoft Windows®, Mac or Linux compatible software for evaluation and testing. The software installation kit includes a USB to serial port driver, facilitating a quick connection between the compass and your System. The compasses can also be connected to a host system using Microsoft Hyperterm®.



## Applications ~ Robots, Navigation, Instrumentation, Survey



### Additional Sensor Information

Includes 3 axis magnetic field sensors utilizing Honeywell HMC1052 chipset for X and Y field sensing and HMC1051Z for Z-axis sensing. The measurement of the roll and pitch angle of the compass is accomplished by using a Memsic 2-axis MEMS Accelerometer. The device measures the acceleration of the force of gravity downward in the X and Y directions. The design also supports the option for direct connection to a pressure sensor for measurement of the depth. The compass will report depth in the compass strings. Compatible pressure transducers direct output is 0.5V – 4.5V (Example: MSI MSP-340).

### Key Specifications for magnetic sensors

Max Field Range	+/- 6	Gauss
Typical Resolution	120	uGauss
Typical Linearity	0.1	%FS
Typical Repeatability err	0.1	%FS
Max X,Y sensor Orthogonally	0.01	degrees
Bandwidth	5	Mhz