

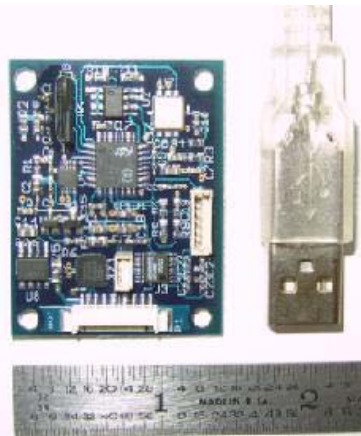


OceanServer USB & Serial 3 Axis Digital Compass

OS3000 Solid State Tilt Compensated Compass with Roll, Pitch and Multiple Connection Options

Data Sheet

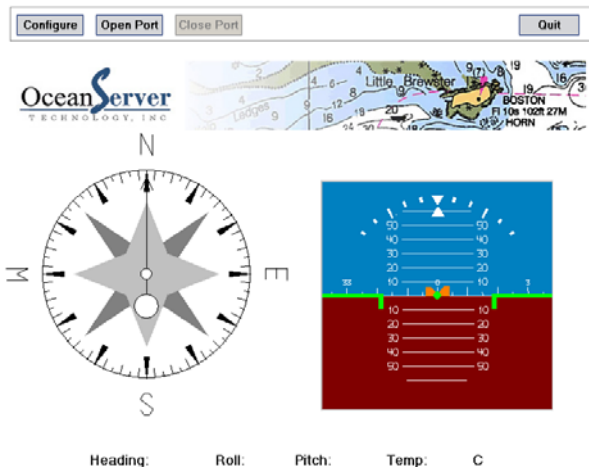
The OS3000 is an extremely small form factor (1.4" x 1.8") three axis, tilt compensated digital compass. The flexible design allows customers to use either a USB or RS232 Serial connection for system integration. The OS3000 provides precise heading, roll and pitch data ideal for rapid attitude measurement. The OS3000 offers an easy to use ASCII interface which includes hard-iron calibration and simple data configuration for your application.



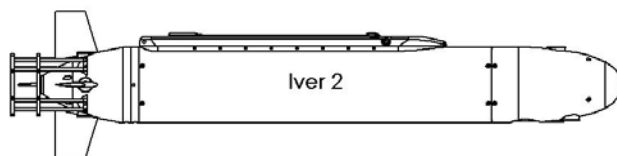
Specifications

- > **Ultra Low Cost Design**
- > **Size : 1.4" x 1.8" PCB**
- > **Precision Compass – Tilt Compensated**
- > **3 – Axis Honeywell Magneto Resistive Sensors**
- > **2 – Axis Memsic MEMS Accelerometer for Roll and Pitch Angle Measurement**
- > **1-20 Hz Continuous Update Rate**
- > **Simple to use ASCII Interface includes Hard-Iron Calibration and Data Configuration**
- > **Digital Filters, Dampening**
- > **USB to Serial Driver or Direct Serial Connection**
- > **Low Power Circuit Consumption (operates on 5V input)**
- > **Accuracy: 1 Degree Azimuth, Resolution: 0.1 Degree**
- > **Roll and Pitch: 0.1 Degree Resolution**

OceanServer compasses include Microsoft Windows®, Mac or Linux compatible software for evaluation and testing. The software installation kit includes a USB to serial port driver, facilitating a quick connection between the compass and your System. The compasses can also be connected to a host system using Microsoft Hyperterm®.



Applications ~ Robots, Navigation, Instrumentation, Survey



Additional Sensor Information

Includes 3 axis magnetic field sensors utilizing Honeywell HMC1052 chipset for X and Y field sensing and HMC1051Z for Z-axis sensing. The measurement of the roll and pitch angle of the compass is accomplished by using a Memsic 2-axis MEMS Accelerometer. The device measures the acceleration of the force of gravity downward in the X and Y directions. Please see the OS3500 for the option for direct connection to a pressure sensor for measurement of the depth.

Key Specifications for Magnetic Sensors

Max Field Range	+/- 6	Gauss
Typical Resolution	120	uGauss
Typical Linearity	0.1	%FS
Typical Repeatability err	0.1	%FS
Max X,Y sensor Orthogonally	0.01	degrees
Bandwidth	5	Mhz